

RELOCATION GUIDE

# SALMON ARM

Small Book, Big Ideas

## All in a Day's Work

**STAKEHOLDER  
FEEDBACK**

**WATER COOLER  
WISDOM**

[WWW.SAEDS.CA](http://WWW.SAEDS.CA)

→ **TEAM  
BUILDING**

→ **BRILLIANT  
BOARD MEETINGS**

→ **SOUNDING BOARD**

LITTLE MOUNTAIN PARK HIKING TRAILS  
VIKTORIA HAACK PHOTOGRAPHY



## WELCOME TO SALMON ARM



### **SALMON ARM** ECONOMIC DEVELOPMENT SOCIETY

220 Shuswap St NE  
Salmon Arm, BC  
V1E 4N2  
(250) 833-0608  
edo@saeds.ca  
[www.saeds.ca](http://www.saeds.ca)

Welcome to Salmon Arm! Our city is located along the shores of the breathtaking Shuswap Lake, within the Secwepemc Nation Traditional Territory, in British Columbia's Southern Interior.

A fast-growing community, Salmon Arm is a “Small City with Big Ideas,” an emerging innovation hub with unmatched quality of place. In a spectacular setting, midway between Vancouver and Calgary, Salmon Arm is strategically situated on the key transportation crossroads of Hwy 1 and 97B. The city is the service centre for the surrounding areas, serving a regional population of approximately 60,000 residents. Offering one of the most diverse economies in the province, Salmon Arm boasts exciting jobs in every sector. The BC Labour Market projections indicate that the Thompson Okanagan Region will have 115,600 new jobs over the next decade, making it the third highest growth region in the province. With a beautiful four-season climate and excellent access to healthcare, education, sports and outdoor recreation, Salmon Arm offers authentic community, various activities, real prosperity and true opportunity. There's room for you here! We know you'll love it as much as we do. We are here to help. Reach out to **Salmon Arm Economic Development Society** to find out more.

*We acknowledge that we are located on the traditional territory of the Secwepemc people, with whom we share these lands and where we live and work together.*



# CONTENTS



## 22 STAKEHOLDER FEEDBACK

Entrepreneur profiles in five key sectors highlight the cutting edge innovation and opportunity here.



**WATER COOLER WISDOM**  
Community profile, stats and fun surprises.



## 21 SOUNDING BOARD

Our vibrant and diverse arts and culture scene inspires community and creativity.

## AUDACIOUS AGENDA

Opportunity meets community. Innovation meets recreation. Prosperity meets affordability. It's all on the Salmon Arm Small City, Big Ideas agenda.

**6:00 AM STUDY SESSION** 04

From kindergarten cubby to university study, and everything in between, options abound.

**8:00 AM TEAM BUILDING** 05

The promise of a fresh start is found in our many community recreation facilities.

**9:00 AM LOGISTICS STRATEGY** 08

Proximity to markets and transportation networks are just part of Salmon Arm's strategic advantage.

**10:00 AM ORG CHART UPDATES** 09

Cities, like organizations, work best when they're small, smart and functional. Here's the map.

**12:00 PM POWER LUNCH** 12

Forget the lunchroom. Refresh and recharge with a wide-range of lunch time dining and distraction.

**1:30 PM BRILLIANT BOARD MEETINGS** 13

From office door and shop floor, to the lakeshore, Shuswap Lake inspires a balanced approach.

**3:00 PM ANNUAL PLANNING** 16

Year in, year out, there's always something to look forward to. Start saving the dates.

**4:00 PM PERSONAL CHECK-UP** 17

Salmon Arm offers a comprehensive suite of healthcare services: a hospital, lab, clinics and health centre.

**5:00 PM MARKET OUTLOOK** 18

The central service hub in the Shuswap region, Salmon Arm features six distinct shopping areas.

**6:00 PM WELCOME HOME RECEPTION** 19

Your home base is the heart of it all. Big or small, house, condo or townhome, find the fit that works for you.

**8:00 PM AFTER HOURS BRAINSTORMING** 20

Out of the office and after hours, kick back and enjoy the accomplishments of the day.

okanagan  
college

okanagan  
college

NOTIFICATION  
6:00 AM



TRAINING  
SESSION

Okanagan College Salmon Arm Campus

## STUDY SESSION



Salmon Arm Innovation Centre



Salmon Arm Secondary, Sullivan Campus

The key to a vibrant city is an appetite for learning. Salmon Arm is a city full of talent and expertise. Because of our superb quality of life, we have been able to attract great teachers and professors. The city offers many learning options, including preschools, public schools, K-12, French immersion options, an outdoor school and a private school. **Okanagan College** also offers a wide variety of university transfer programs and continuing studies. Served by the **North Okanagan Shuswap School District 83**, Salmon Arm benefits from six neighbourhood elementary schools and several centrally located middle, junior and senior high schools.

The lifelong learning culture goes hand-in-hand with diverse child care options, early learning opportunities, a large branch of the **Okanagan Regional Library**, as well as a suite of extracurricular private lessons in music, dance and art. Like many smaller communities, we are proud of our youth programs such as Guides, Scouts, Cadets and our 4-H agricultural programs. New to the scene, the **Salmon Arm Innovation Centre Powered by SASCUC**, features the fully equipped **Shuswap Makerspace**.

## SALMON ARM RELOCATION GUIDE TEAM BUILDING

NOTIFICATION  
8:00 AM



Walk, run, bike, hike, climb, skate or glide – the choice is yours. Salmon Arm offers recreational amenities more commonly found in larger urban centres. This provides a wide variety of options and attracts premier sporting events and tournaments. The Shuswap Trail Alliance has a world-class network of over 600 kms of regional trails. The region is also a golfer's paradise, with five championship courses within a 40 km radius. The exceptional indoor tennis facility ensures tennis play year-round. And be sure to check out the groomed sledding trails at Fly Hills for winter snowmobiling. The city works in close collaboration with the [Salmon Arm Recreation Society](#) and the [Shuswap Trail Alliance](#). We truly strive for four-season, all-ages, all-interests and all-abilities work-life balance.



Shaw Centre



Fletcher Park Playground



Disk Golf Course



Silver Creek Cycle Path

[salmonarmrecreation.ca](https://salmonarmrecreation.ca)

[shuswaptrails.com](https://shuswaptrails.com)



TWIN SHEET ARENA



25 METRE SWIMMING POOL



INDOOR SOCCER & TENNIS



600 KMS REGIONAL TRAILS

# SALMON ARM RELOCATION GUIDE

## TEAM BUILDING

NOTIFICATION  
8:00 AM



FORESHORE  
RUN

### PUBLIC AMENITIES

- [BLACKBURN PARK](#)
- [CANOE BEACH](#)
- [COYOTE PARK](#)
- [CURLING CENTRE](#)
- [FIELD OF DREAMS](#)
- [FLETCHER PARK](#)
- [FORESHORE TRAIL](#)
- [FLY HILLS SNOWMOBILE TRAIL](#)
- [JACKSON FIELDS](#)
- [JACKSON PARK](#)
- [KLAHANI PARK](#)
- [LARCH HILLS NORDIC SKIING](#)
- [LITTLE MOUNTAIN PARK](#)
- [MCGUIRE LAKE PARK](#)
- [MARINE PEACE PARK](#)
- [MOSQUITO PARK](#)
- [PARK HILL TRAILS](#)
- [SALMON ARM FISH & GAME CLUB](#)
- [SASCU RECREATION CENTRE](#)
- [SASCU MEMORIAL ARENA](#)
- [SHAW CENTRE](#)
- [SOUTH CANOE TRAILS](#)
- [INDOOR/OUTDOOR TENNIS CLUB](#)

	ARCHERY	BASEBALL DIAMOND	BIKE PATHS	BOAT LAUNCH	COURTS	EQUESTRIAN AREA	FOOTBALL FIELD	GYM	ICE SURFACES	MOTORIZED TRAILS	PARKS	PLAYGROUND	SHOOTING RANGE	SKATE PARK	SLEDDING AREA	SOCCER FIELD	SPRAY PARK	SWIMMING POOL	WALKING TRAILS	X-COUNTRY SKI AREA	
BLACKBURN PARK																					
CANOE BEACH																					
COYOTE PARK																					
CURLING CENTRE																					
FIELD OF DREAMS																					
FLETCHER PARK																					
FORESHORE TRAIL																					
FLY HILLS SNOWMOBILE TRAIL																					
JACKSON FIELDS																					
JACKSON PARK																					
KLAHANI PARK																					
LARCH HILLS NORDIC SKIING																					
LITTLE MOUNTAIN PARK																					
MCGUIRE LAKE PARK																					
MARINE PEACE PARK																					
MOSQUITO PARK																					
PARK HILL TRAILS																					
SALMON ARM FISH & GAME CLUB																					
SASCU RECREATION CENTRE																					
SASCU MEMORIAL ARENA																					
SHAW CENTRE																					
SOUTH CANOE TRAILS																					
INDOOR/OUTDOOR TENNIS CLUB																					



# SALMON ARM RELOCATION GUIDE

## TEAM BUILDING

NOTIFICATION  
8:30 AM



SPIN CLASS

### PRIVATE AMENITIES

ANYTIME FITNESS

BROOKSIDE STABLES

BULLDOGS FITNESS BOXING CENTRE

CANOE BEACH CAFE

CAPTAIN'S COVE MARINA

THE CARDIO CONNECTION

CLUB SHUSWAP

CROSSFIT SALMON ARM

GALERIA ESTIMA FITNESS & YOGA

GRATITUDE YOGA

GYM OF ROCK

JUNGLE MANIA

JUST FOR KICKS DANCE STUDIO

MOMENTUM GYMNASTICS

NAMASTE YOGA & WELLNESS CENTRE

SALMON ARM GOLF CLUB

SEA-DOG RENTALS

SHUSWAP DANCE CENTRE

SHUSWAP NATIONAL GOLF COURSE

SHUSWAP TOTAL FITNESS

SKYDIVE NOVA

STUDIO M MOVEMENT & PILATES

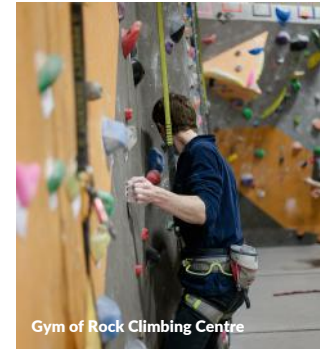
SWEET FREEDOM YOGA

TEIXEIRA PERFORMANCE STABLES

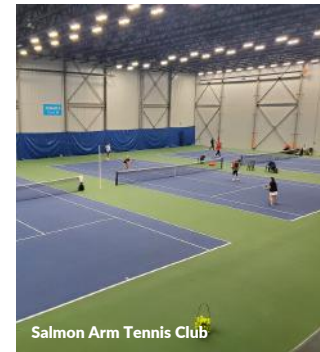
TOPLINE STABLES & SHOW PARK

WHIZBANG BOXING STUDIO

	BOAT MOORAGE	BOXING RING	COURTS	DANCE CENTRE	GOLF COURSE	GYM	GYMNASTICS CENTRE	INDOOR CLIMBING WALL	RIDING STABLES	SKYDIVING CENTRE	SPIN STUDIO	YOGA AND FITNESS	WATERCRAFT RENTALS
ANYTIME FITNESS													
BROOKSIDE STABLES													
BULLDOGS FITNESS BOXING CENTRE													
CANOE BEACH CAFE													
CAPTAIN'S COVE MARINA													
THE CARDIO CONNECTION													
CLUB SHUSWAP													
CROSSFIT SALMON ARM													
GALERIA ESTIMA FITNESS & YOGA													
GRATITUDE YOGA													
GYM OF ROCK													
JUNGLE MANIA													
JUST FOR KICKS DANCE STUDIO													
MOMENTUM GYMNASTICS													
NAMASTE YOGA & WELLNESS CENTRE													
SALMON ARM GOLF CLUB													
SEA-DOG RENTALS													
SHUSWAP DANCE CENTRE													
SHUSWAP NATIONAL GOLF COURSE													
SHUSWAP TOTAL FITNESS													
SKYDIVE NOVA													
STUDIO M MOVEMENT & PILATES													
SWEET FREEDOM YOGA													
TEIXEIRA PERFORMANCE STABLES													
TOPLINE STABLES & SHOW PARK													
WHIZBANG BOXING STUDIO													



Gym of Rock Climbing Centre



Salmon Arm Tennis Club



Shuswap National Golf Course

**SALMON ARM RELOCATION GUIDE**  
**LOGISTICS STRATEGY**



**✓ PROXIMITY TO MARKETS**

Calgary	515 KM
Edmonton	814 KM
Kamloops	112 KM
Kelowna	105 KM
Portland	898 KM
Prince Rupert	1,346 KM
Seattle	574 KM
Vancouver	467 KM
Victoria	541 KM

**✓ INTERNATIONAL PORTS OF ENTRY**

**AIR**  
 Kelowna, Vancouver

**✓ TRANSPORTATION NETWORKS**

 **TRANS CANADA HWY 1 HWY 97 BC**

 **CP RAIL MAINLINE**

 **TRUCKING COMPANIES**  
 Regional, National, Intermodal

 **PORT OF VANCOUVER**  
 Bulk, containers, break bulk, liquid bulk, automobiles and cruise

 **RIDER EXPRESS, E-BUS**  
 Daily Service, East/West, North/South

**LAND**  
 Lower Mainland, Osoyoos

**✓ AIR SERVICE**

**SHUSWAP REGIONAL (CZAM)**  
 Charters, Private aircraft, MediVac, Rapattack Fire Fighting Base

**KELOWNA INTL (YLW)**  
 Domestic, International, Cargo, Courier

**KAMLOOPS (YKA)**  
 Domestic, Cargo, Courier

**PORT**  
 Port of Vancouver



**SALMON ARM RELOCATION GUIDE**  
**ORG CHART UPDATES**



## SALMON ARM RELOCATION GUIDE ORG CHART UPDATES

### DOWNTOWN



Downtown Salmon Arm, just steps from [Marine Peace Park](#) and the wharf, is the central commercial area. It has financial institutions, professional services, retail, restaurants, spas and salons. Buildings are two to three stories high with commercial space on the ground level and offices or apartments upstairs. The [Ross Street Plaza](#) is a vibrant gathering place and home to the [Downtown Salmon Arm Farmers Market](#). [City Hall](#), the [School District Office](#) and the [Regional District Offices](#) are also located in the downtown core.

 [salmonarmdowntown.com](http://salmonarmdowntown.com)

### INDUSTRIAL PARK



### UPTOWN



Just moments east of Downtown Salmon Arm on Hwy 1, Uptown features a modern commercial development which includes [Askew's Foods](#) and the [SASCU Credit Union](#). Hotels, service stations and restaurants are located nearby, conveniently serving users of the [SASCU Recreation Centre](#), [Shaw Centre](#) twin sheet arena and [Okanagan College](#). The neighbourhood features a mix of single-family and multi-family developments, as well as elementary schools and walking trails.

### WEST END



The West End of the city features a combination of commercial services, hotels, two shopping centres and [Westgate Public Market](#). As the area borders agricultural lands, there are also two family-owned farm markets, as well as two farm supply stores. Tucked behind the highway commercial area are a variety of housing options from single-family to entry-level strata homes. The area has seen significant growth in the last five years, and new rental apartment units are in development.

## SALMON ARM RELOCATION GUIDE ORG CHART UPDATES

### CANOE (North & South)



Just eight minutes from Salmon Arm, North Canoe is a well-established neighbourhood on Shuswap Lake. Showcasing a mix of classic and modern homes, the village feel is enhanced by the local elementary school, market, trails and beach. South Canoe is more agricultural in nature and features mountain bike trails, [Klahani Park](#), equestrian facilities and an outdoor school.

### NORTH BROADVIEW



Well-established farms and orchards grace the North Broadview neighbourhood. Properties are generally larger acreages, giving the area a country feel, in close proximity to city amenities, including an elementary school and the senior high school.

### HILLCREST



This neighbourhood features amazing views overlooking Shuswap Lake. Comprising single-family homes, Hillcrest is well served by the elementary and middle schools and is just minutes from both Uptown and Downtown Salmon Arm. A network of trails connects the neighbourhood, and families enjoy [Little Mountain Park](#) on its eastern edge.

### SILVER CREEK



Silver Creek, a close neighbourhood located in the Columbia Shuswap Regional District, is a lush farming area west of Salmon Arm that comprises larger acreages and active farms. The community has a school, store, fire hall, community park and a library.

### RAVEN



A hillside neighbourhood to the north of Hwy 1, Raven boasts amazing views of Shuswap Lake and largely comprises single-family homes on larger lots. It, too, is a short trip to downtown. Residents benefit from [Coyote Park](#) and its vast network of trails, including the Foreshore Trail, with its equally gorgeous views.

### GLENEDEN



Gleneden, west of Downtown, is agricultural in nature with large properties and active farms. The elementary school and community hall anchor the neighbourhood. Convenient access to the [Fly Hills](#) area makes it a popular hiking and motorized trail riding destination.



SALMON ARM RELOCATION GUIDE  
**POWER LUNCH**

NOTIFICATION  
 12:00 PM



**MARKETS**  
 WED: Organic  
 SAT: Downtown

Casual, close-by and good-to-go, the food culture in Salmon Arm is impressive for a community of this size. It's also one that is deeply rooted in agriculture. The amazing selection of food products is celebrated by local restaurants, cafes and food trucks. With over 100 farms in the city and 600 region-wide, there are plenty to choose from and enjoy. The **Downtown Salmon Arm Farmers Market**, in addition to the **All-Organic Market** and special event markets, provide the best of our seasonal bounty. The city is well served by national and regional grocers. The City of Salmon Arm was pleased to recently welcome **ZEST Commercial Food Hub** to the scene. Zest is a local food incubator and production facility focused on regional food sustainability and support of local growers and producers.



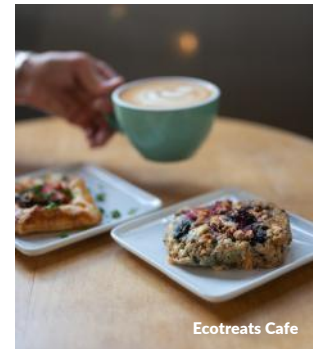
Arma Greek Food and Catering



Ovino Winery



Little Red Hen Bakery



Ecotreats Cafe



**LOCALLY PRODUCED  
 CIDER, WINE AND BEER**



**15 +  
 PATIOS**

**40+**

**RESTAURANTS  
 AND CAFES**

[zestfoodhub.ca](https://zestfoodhub.ca)  
[salmonarmdowntown.com/dining-entertainment](https://salmonarmdowntown.com/dining-entertainment)

## BRILLIANT BOARD MEETINGS

NOTIFICATION  
1:30 PM



BOAT DATE  
CANOE BEACH

### Discover the Lakeshore Advantage

As Salmon Arm is nestled around the shores of Shuswap Lake, you're never more than 10 minutes from the water.



**4** SEASON FISHING



**1** AWESOME BEACH

ROWING AND PADDLING CLUB  
BEACH VOLLEYBALL  
CAFE, RENTALS & PICNIC AREA



**2** FULL SERVICE MARINAS



**2** PUBLIC WHARFS



**2** PUBLIC BOAT LAUNCHES



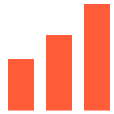
# WATER COOLER WISDOM

NOTIFICATION

 SMALL CITY, BIG IDEAS

## DEMOGRAPHICS

Population



**2016** 17,706  
**2021** 19,432  
**% Change** 9.7%

Market Area



**2021** 57,512  
Population Est. CSRD

Distribution



**0-14** 14.5%  
**15-64** 55.1%  
**65+** 30.4%

Business



**228**  
per 1,000  
residents

Employment



**4.3%**  
Unemployment rate  
December 2022

Income



Salmon Arm **\$68,000**  
Median after-tax income of households

**DID YOU KNOW THAT THERE ARE OVER 100 HIGH TECH BUSINESSES OPERATING IN SALMON ARM, EMPLOYING OVER 1,000 PEOPLE?**

## COMMUNITY SERVICES



**9-1-1**



RCMP Salmon Arm Fire Department  
BC Ambulance Services



Shuswap Lake General Hospital  
Salmon Arm Outpatient Lab  
Salmon Arm Health Centre  
Doctor Offices  
Walk-In Clinics  
Dentistry, Optometry  
Chiropractic, RMT, Physiotherapy  
Canadian Mental Health Association  
Shuswap Children's Association  
The Shuswap Family Centre  
Safe Society  
Aspiral Youth Partners  
Seniors' Centres  
Shuswap Association for Community Living  
Shuswap Immigrant Services Society  
SPCA



Rotary Groups  
PROBUS Club  
Elks Club  
Salmon Arm Legion  
Women Who Wine



Service BC  
Service Canada  
Canada Post



Home to  
55+ BC Games 2024

## TRANSPORTATION



GREENWAYS & TRAILS



**16** PUBLIC CHARGING STATIONS



**2 HR FREE** 

**FYI**

SALMON ARM IS AT THE INTERSECTION OF NORTH AMERICA'S CORE ROUTE HIGHWAYS HWY 1 AND HWY 97B

## CLIMATE



AVERAGE High



AVERAGE Low



ANNUAL Rain Fall



ANNUAL Snowfall



ANNUAL Sunshine



## SALMON ARM RELOCATION GUIDE

### WATER COOLER WISDOM



Salmon Arm is located on one of four arms of Shuswap Lake: Salmon Arm (southwest), Shuswap Arm (west), Anstey Arm (northeast), and Seymour Arm (north). These arms are joined by a shallow passage called The Narrows. Because the lake is shaped like the letter H, it features over 1,400 kilometres of shoreline.



#### ZEST FOOD HUB

Commercial Food Hub, business incubator and shared use kitchen  
[zestfoodhub.com](http://zestfoodhub.com)



#### INNOVATION CENTRE

Makerspace, business incubator and coworking space  
[innovatesa.ca](http://innovatesa.ca)



#### BANKING

BMO, CIBC, RBC, SASCU Credit Union, Scotiabank, TD Bank



The current home of Salmon Arm Arts Centre (the city's original post office) was designed by architect Thomas W. Fuller, son of Thomas Fuller, who designed the Parliament Buildings in Ottawa, and features the same style of Palladian windows ([www.salmonarmartscentre.ca](http://www.salmonarmartscentre.ca)).



[BOUNCE RADIO \(BELL MEDIA\)](#)  
[SALMON ARM OBSERVER \(BLACK PRESS\)](#)  
[VOICE OF THE SHUSWAP \(COMMUNITY RADIO\)](#)  
[FRIDAY AM NEWS](#)  
[SHUSWAP MAGAZINE](#)

### ROSS STREET PLAZA MOSAIC

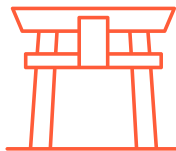


In 2014, the Ross Street Plaza Mosaic was completed featuring the four seasons of the Shuswap, its landscape and wildlife. It took 5 years to complete with countless volunteer hours.



The Salmon Arm Fall Fair is one of the oldest in the province. The grounds feature 22.8 acres of property, barns, buildings and grandstands ([www.salmonarmfair.com](http://www.salmonarmfair.com)).

Salmon Arm's sister city is Inashiki, Ibaraki, in Japan.



The giant treble clef in downtown Salmon Arm is thought to be the largest in the world.  
[youtu.be/QNbZLmvBP80](https://youtu.be/QNbZLmvBP80)



#### DID YOU KNOW?

The SALMON ARM WHARF is the longest, wooden, curved, inland wharf in North America.

## SALMON ARM RELOCATION GUIDE

NOTIFICATION  
3:00 PM



EVENTS  
CALENDAR  
UPDATED

Salmon Arm Arts Centre

## ANNUAL PLANNING



Fly Hills

- [shuswaptourism.ca/calendar](https://shuswaptourism.ca/calendar)
- [travelsalmonarm.ca/mobileoutreach](https://travelsalmonarm.ca/mobileoutreach)
- [letsridebc.com/salmon-arm](https://letsridebc.com/salmon-arm)

Four-season fun is always on offer in Salmon Arm. Given the vast number of non-profits, associations and service groups, there's always something exciting in the works. From markets and festivals, to races and tournaments, to performances and concerts, to fundraisers and great causes, the trick is to plan ahead so you won't miss a beat. In partnership with the **City of Salmon Arm** and the **Shuswap District Arts Council**, the **Salmon Arm Economic Development Society** is a signatory to the community's Cultural Master Plan, ensuring a vibrant, forward-looking approach to cultural development. Check out live music events at **Song Sparrow Hall**, current exhibits at the **Salmon Arm Arts Centre**, live productions at **Shuswap Theatre** or current movies at the **Salmar Theatre**. Recently, we have seen the introduction of exciting and premier events finding a welcome home in Salmon Arm. In 2024, the City will host the **55+ BC games**.



### WINTER

Downtown Light Up  
Larch Hills Loppet  
Trail Alliance Fundraiser  
Winterfest  
International Film Festival  
Heritage Week  
Salmon Arm Snowblazers



### SPRING

Golf Season  
Farmers Markets  
Salty Dog Bike Enduro  
Writers' Festival  
Bike Month  
Shuswap Ultra  
Bollywood Fundraiser



### SUMMER

Roots and Blues Festival  
Theatre on the Edge  
Wednesdays on the Wharf  
RJ Haney Dinner Theatre  
Multicultural Festival



### FALL

Salmon Arm Fall Fair  
Adams River Salmon Run  
Pride Festival  
BCHL Junior A Silverbacks

## SALMON ARM RELOCATION GUIDE

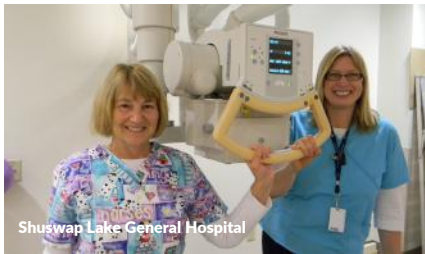
NOTIFICATION  
4:00 PM



DENTAL  
CHECKUP

Shuswap Lake General Hospital

## PERSONAL CHECK-UP



Shuswap Lake General Hospital



Gratitude Hot Yoga Wellness

**Interior Health**, a major local employer, serves Salmon Arm and the Shuswap region, offering a variety of health services to meet the needs of all residents. The city is home to over 60 general practitioners and specialists, with access to a hospital, public health nursing, emergency care, lab services, walk-in clinics, doctors' offices, dental, orthodontic, eye care, senior supportive living facilities and pharmacies. In addition, Salmon Arm has a growing health cluster, including naturopaths, registered massage therapists, chiropractors and physiotherapists.

A shared approach to healthy living is key to community building and wellbeing. The **Shuswap Community Foundation** is a key partner in building healthy community capacity. The **Shuswap Hospital Foundation** actively supports the hospital through sustained corporate and community fundraising, significantly contributing to lifesaving equipment.



41-BED HOSPITAL



OUTPATIENT LAB



SUPPORTIVE CARE



AMBULANCE  
STATION



PHARMACIES

[interiorhealth.ca](https://interiorhealth.ca)



## SALMON ARM RELOCATION GUIDE MARKET OUTLOOK

NOTIFICATION  
5:00 PM



RENEW  
BUSINESS  
LICENSE

Salmon Arm is the central provider of retail and business services in a market area of close to 60,000 people. There are six distinct shopping areas, a full suite of services including [Canada Post](#) and couriers, corporate services (lawyers, notaries, accountants and brokers), all major Canadian banks, the local SASCU Credit Union, government agents ([Service BC](#), [Service Canada](#)) and major telecom companies.

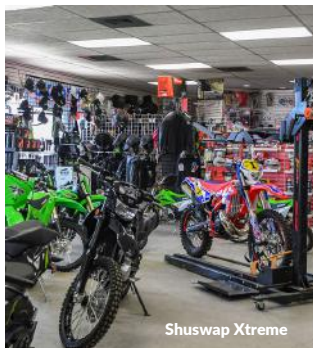
The healthy business climate attracts many new and established entrepreneurs who benefit from the significant competitive advantages of doing business here. The [Salmon Arm Economic Development Society's](#) proactive approach sees us working collaboratively with [Downtown Salmon Arm](#), [Community Futures Shuswap](#), and the local [Chamber of Commerce](#).



Man + Woman Home



Forage General



Shuswap Xtreme



Westside Stores

[saeds.ca](#) [shuswapbusinesshub.ca](#)  
[salmonarm.ca](#)

### TELECOM & UTILITIES



Bell  
Shaw  
Telus  
Rogers



BC Hydro  
Fortis  
Municipal Water  
Municipal Wastewater

## SALMON ARM RELOCATION GUIDE

NOTIFICATION  
6:00 PM



DINNER WITH  
THE  
NEIGHBOURS



Private home

## WELCOME HOME RECEPTION



Overlooking Salmon Arm Bay

Salmon Arm's population growth over the last five years (close to a 10% increase from 2016 to 2021) has brought with it a welcome increase in housing diversity and density. While most homes are single-family dwellings, there is an increase in condominium, apartment and townhome developments. This lends itself well to those seeking attainable home ownership, as entry level opportunities are increasing and property continues to hold its value.

 [realtor.ca/bc/salmon-arm/real-estate](https://realtor.ca/bc/salmon-arm/real-estate)

Many new residents have discovered Salmon Arm while visiting the Shuswap on vacation. The area is well served by professional realtors, mortgage brokers, property appraisers, home inspectors, five national banks and the local **SASCU Credit Union**. The **Shuswap Construction Industry Professionals** represent the many skilled construction trades in the region.



62%

SINGLE  
DETACHED

5%

MOVABLE  
DWELLING

3%

SEMI  
DETACHED

8%

ROW  
HOUSE

8%

APARTMENT  
DUPLEX

14%

APARTMENT  
OTHER

**8,110 Households** **\$668,000** Average Assessed Value

Housing Characteristics Source: 2021 Census, Stats Canada

Home Value Source: 2022 BC Assessment

## SALMON ARM RELOCATION GUIDE

# AFTER HOURS BRAINSTORMING

NOTIFICATION  
8:00 PM



WINE TASTING

With a growing population, Salmon Arm has seen a robust growth in nightlife and entertainment. From both new and established wineries, breweries, cideries and distilleries, to tap rooms, lounges, cafes and bistros. The nightlife pairs well with Salmon Arm's growing performance, concert, event and exhibition offerings.

Salmon Arm's long-established entrepreneurship and innovation mindset have enormous influence on what happens here after hours. Creative communities like Salmon Arm well understand the link between a vibrant arts and entertainment scene, a diverse economy and a connected community. This fosters local pride, support for important causes, as well as an ability and willingness to take on unique challenges in memorable and meaningful ways.



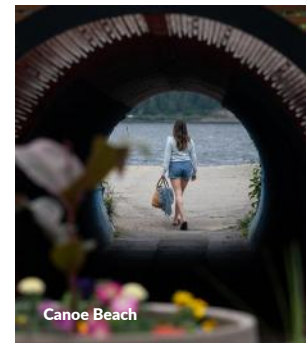
ZEST Commercial Food Hub



Northyards Cider Co.



Marionette Winery



Canoe Beach



BREWPUBS



LOUNGES



CAFES



FINE AND  
CASUAL DINING

[salmonarmdowntown.com/dining-entertainment/](https://salmonarmdowntown.com/dining-entertainment/)



NOTIFICATION



RESERVE  
Roots and Blues  
TICKETS



Salmon Arm Roots and Blues Festival

SOUNDING BOARD



Marine Peace Park

The vibrant arts and culture scene is always a welcome surprise to Salmon Arm newcomers. The beauty of the Shuswap region inspires artists of every kind. Local artists are well supported by the **Salmon Arm Arts Centre**, **Salmon Arm Folk Music Society**, and amazing performance venues like **Song Sparrow Hall**. There's also a lively music and theatre scene in the Shuswap. You won't want to miss Wednesdays on the Wharf in the summer, nor will you be able to resist the live music performances at multiple locations, including the Ross Street Plaza, local coffee shops, restaurants and pubs. From jazz to symphony, and improv to opera, our arts and culture offerings cover the full creative spectrum.



**5** SCREEN  
MOVIE  
THEATRES

Salmar Theatres  
Film Festivals  
Live from the MET Opera  
Live Music & Events



**EPIC** MUSIC  
SCENE

Song Sparrow Hall  
Salmon Arm R&B Festival  
Wednesdays on the Wharf  
Salmon Arm Jazz Club  
Kamloops Symphony



**COMMUNITY**  
THEATRE

Shuswap Theatre  
Annual Productions  
Theatre on the Edge  
RJ Haney Dinner Theatre  
Theatre Festivals



**HERITAGE**  
PARK &  
MUSEUM

Seasonal Exhibits  
Walking Tours of Village  
Sprig of Heather Cafe  
Pioneer Days



**ANNUAL**  
WRITERS'  
FESTIVAL

Writers Groups  
Workshops  
Readings  
3 Independent Book Stores



**1** AMAZING  
ARTS  
CENTRE

Annual Exhibits  
Artists Talks  
Events & Performances  
Workshops

[salmarmtheatre.com](http://salmarmtheatre.com) [rootsandblues.ca](http://rootsandblues.ca) [shuswaptheatre.com](http://shuswaptheatre.com) [salmonarmmuseum.org](http://salmonarmmuseum.org)  
[wordonthelakewritersfestival.com](http://wordonthelakewritersfestival.com) [salmonarmartscentre.ca](http://salmonarmartscentre.ca) [songsparrowhall.ca](http://songsparrowhall.ca)

## STAKEHOLDER FEEDBACK

### 01 FOOD AND BEVERAGE PROCESSING

Salmon Arm has experienced consistent growth trends in the number of agri-food businesses operating in our city.

### 02 HIGH TECH & ADVANCED MANUFACTURING

Home to over 100 high-tech manufacturing firms, the sector employs over a thousand people. This ecosystem of innovation is growing, and there's always room for more firms with big ideas.

### 03 TOURISM

Consistently highly rated as an excellent destination for soft adventure and family fun, this sector benefits from the enthusiasm and diversity of tourism providers and accommodators. Top it off with world class events, and it's no wonder our guests come back time after time and often stay for good.

### 04 WOOD PRODUCTS

Our entrepreneurial spirit pioneered automated processing technology in wood products. If there's a mill where you call home, chances are, Salmon Arm's technology had a hand in building it. The tradition continues with our well-established wood products, sawmill equipment manufacturing firms and forest consulting firms.

### 05 BUSINESS SERVICES

Teamwork makes the dream work. As a small city, Salmon Arm is powered by collaboration and innovation, and these philosophies extend to our many business support services. We all work together to help you succeed.





ZEST Commercial Food Hub

## 01 FOOD AND BEVERAGE PROCESSING



**MIKE SCHROEDER,  
LAKELAND FARMS**

*"Farm For Tomorrow. We want to build on the success of generations before us and leave our kids with the opportunity to do the same."*

 [zestfoodhub.ca](http://zestfoodhub.ca)

**Small City. Big Agriculture. Big Community. Big Food.**

Food and beverage processing is a robust and growing economic cluster in Salmon Arm. This region accounts for 16% of British Columbia's total food and beverage manufacturing and has seen consistent growth trends for the last decade. With more than 50 unique food and beverage processing businesses operating within the City, this sector is fed by broad access to locally grown foods. There are over 100 farms operating within the City of Salmon Arm, and an additional 600 in the Shuswap region, providing diverse inputs to help fuel this processing sector.

Growth is being driven by the broad opportunity for value-added food processing, the increasing demand for locally grown food products and the focus on local food sustainability. Salmon Arm's employment share for food and beverage processing is three times the Canadian average.

With a focus on creating a supportive environment for this priority sector, the **Salmon Arm Economic Development Society** launched the **Zest Commercial Food Hub**. This shared-use food processing space provides an affordable, fully equipped space to incubate and accelerate food and beverage processing businesses.





TechBrewing Robotics Inc

## 02 HIGH TECH AND ADVANCED MANUFACTURING



**LORELEI GUIDOS**  
**RAPTOR INTEGRATION INC**

*"As a high-tech hub, we can pull resources from all over and bring them to this beautiful city and continue to grow and develop our tech sector and the businesses within it."*

Salmon Arm's high-tech and advanced manufacturing cluster is a unique element of our economy. This strong cluster of over 100 businesses employs more than 1,000 people or 8% of the city's workers; an employment concentration that is a remarkable 60% higher than the national average.

Our high-tech and advanced manufacturing cluster is healthy, diverse and adaptable to an ever-changing economic landscape. We're far from a one-size-fits-all small economy. In fact, part of our resilience comes from the impressive variety of products emerging from our community. Salmon Arm is home to Western Canada's largest hub of companies that specialize in the design and manufacture of automated sawmill equipment. There's diversity in other products being manufactured in our community too, including plastics, recycled rubber products, robotics, retractable roll shutters, building products, alloys, advanced metal fabrication and machining and aerospace products.

The Salmon Arm Industrial Park, and the deep talent pool it is home to, is renowned for providing innovative solutions and high-quality products around the globe.

[bit.ly/salmonarmhightech](https://bit.ly/salmonarmhightech)

**Small City. Big Tech. Big Opportunities. Big Growth.**



Shuswap Lake

### 03 TOURISM



#### **SAPPHIRE GAMES SALMON ARM VISITOR SERVICES**

*"The competitive advantage to starting a tourism business here is the huge amount of community support and the network of partners who work together to support events and attractions."*

[www.travelsalmonarm.ca](http://www.travelsalmonarm.ca)

Salmon Arm's breathtaking location along the shores of Shuswap Lake, coupled with its desirable four-season climate, make this city an ideal destination for visitors. A beautiful half-day drive from either Vancouver or Calgary, or a short flight into one of our nearby international airports, Salmon Arm scores high on accessibility. The city is located at the intersection of two key transportation corridors, Hwy 1 and Hwy 97B, each seeing thousands of vehicles daily, creating significant opportunities for new tourism experiences to be developed.

Tourism accounts for 12% of Salmon Arm's employment and is an important contributor to the regional economy. The region has invested in significant built and human capital to support the growth of this priority sector including 12 hotel and motels, a significant inventory of B&Bs, vacation rentals and campgrounds, over 600 km of regional hiking and biking trails, organized sports, athletic fields, golf courses, conference venues, a twin sheet ice arena and a pool and indoor sports complex. If you are considering starting a business or hosting an event here, contact the **Salmon Arm Economic Development Society** to find out more about the community support and statistical information that can help you along your way.

**Small City. Big Heart. Big Adventure. Big Welcome.**





Canoe Forest Products

## 04 WOOD PRODUCTS



**JOHN DREW**  
**FORSITE CONSULTING**

*"Salmon Arm is a great place to live and work with four seasons of fun and activities. The small town feel makes Salmon Arm a great place to raise a family and attracts young families here."*

Salmon Arm has a well-established and diverse wood products sector, which is a significant contributor to the regional economy. Salmon Arm's largest private sector employer is Gorman Brothers' Canoe Forest Products, a producer of **CANOE brand®**, which has distinguished itself as a premium quality plywood panel that is well-recognized and valued throughout the world.

Building further on Salmon Arm's strong wood products foundation is the proud acknowledgement that the city is home to Western Canada's largest hub of companies that specialize in the design and manufacturing of automated sawmill equipment, led by forestry companies including **USNR**, **BID Group**, **Raptor Integration** and **Mill Tech Industries**. Salmon Arm is also recognized as an industry leader in forestry management consulting, providing in-depth forestry knowledge and skills to create innovative solutions from strategic timber supply to on-the-ground forest operations.

This strong foundation of talent and opportunity continues to attract skilled professionals and entrepreneurial newcomers to this innovative business sector. Bring us your big ideas.



**Small City. Big Plans. Big Ideas. Big Fun.**





Downtown Salmon Arm

## 05 BUSINESS SERVICES



### **DUSTIN SERVISS** **SERVISS WEALTH MANAGEMENT**

*"With the influx of people from other centres, there is a refresh on ideas, knowledge and ways businesses can offer their product or service here."*



**Small City. Big Life. Big Fun. Big Property. Big Personality.**

With close to 20,000 residents, Salmon Arm is the largest city in the Columbia Shuswap Regional District. The city has established itself as the business service centre for the close to 60,000 regional residents, providing solutions in the areas of commerce, legal and government services, as well as healthcare and education. Home to five major banks and [SASCU Credit Union](#), major courier companies, law and real estate firms, as well as [Service BC](#) and [Service Canada](#) offices, Salmon Arm is the hub for regional business activities.

The city's five-year job growth (2015-2020) in business services outpaced the provincial average by 18%, adding close to 400 workers in the sector. Salmon Arm will continue to build on this reputation as an established business services centre and welcomes new entrepreneurs interested in establishing their businesses in this priority sector. The city's participation in the [BC Provincial Nominee Program - Entrepreneur Immigration Pilot](#), provides an accelerated pathway to immigration for entrepreneurs. Part of the [Rural and Northern Immigration Pilot program](#), Salmon Arm provides a unique and expedited avenue for immigration for foreign workers who want to work and live in our community. [Shuswap Immigrant Services Society](#) is an exceptional support agency here to welcome and support our newcomers.



# SALMON ARM

SMALL CITY, BIG IDEAS

NOTIFICATION  
 SEE YOU SOON

Published by:  
Salmon Arm Economic Development Society

Design and Copywriting:  
Mediability Corporate Communications Ltd.

Photographers:  
Viktoria Haack @viktoriahack  
Jessica Lambert @alpinewildbloom\_images  
Kristal Burgess @kristalburgessphotography  
Winston Pain  
Lauren Heroux

Disclaimer:  
The information contained within this publication was compiled by the Salmon Arm Economic Development Society. Every effort has been made to ensure its accuracy. Please note that this information can change at any time without notice. It is presented for information purposes only and is not intended as an endorsement of any of the businesses, organizations or external links. We encourage all users to verify information with independent research wherever possible. Please contact the Salmon Arm Economic Development Society with questions, comments or requests for additional information.

Copyright 2023  
All Rights reserved  
Designed and Printed in Canada

Salmon Arm Economic Development Society  
PO Box 130  
220 Shuswap St NE  
Salmon Arm BC  
V1E 4N2

(250)833-0608  
edo@saeds.ca  
[www.saeds.ca](http://www.saeds.ca)

